

DRAWING NUMBER  
**20-68**

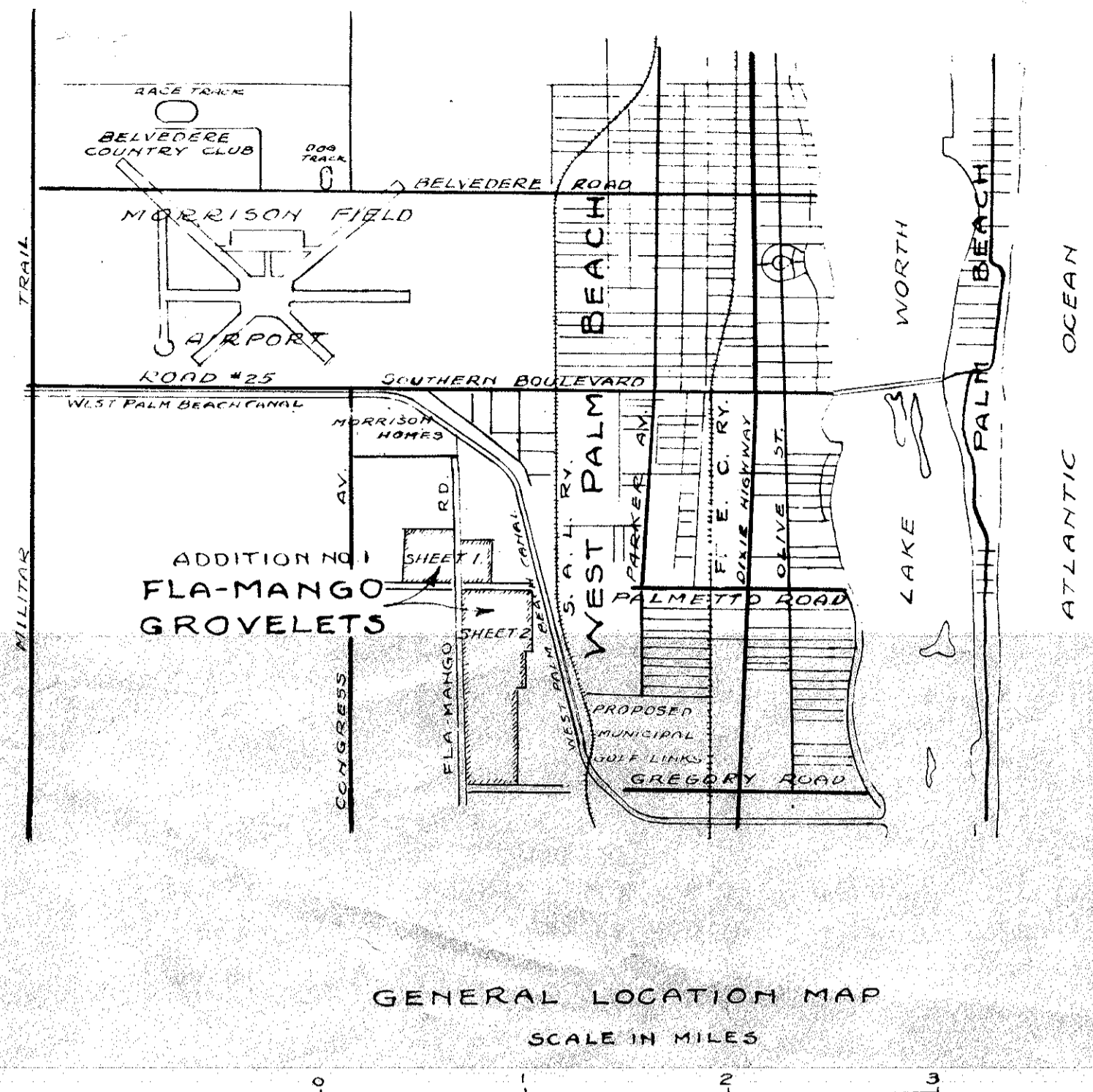
DRAWING NUMBER  
PLAN HOLD CORPORATION • IRVINE, CALIFORNIA

DRAWING NUMBER  
PLAN HOLD CORPORATION • IRVINE, CALIFORNIA

DRAWING NUMBER  
PLAN HOLD CORPORATION • IRVINE, CALIFORNIA

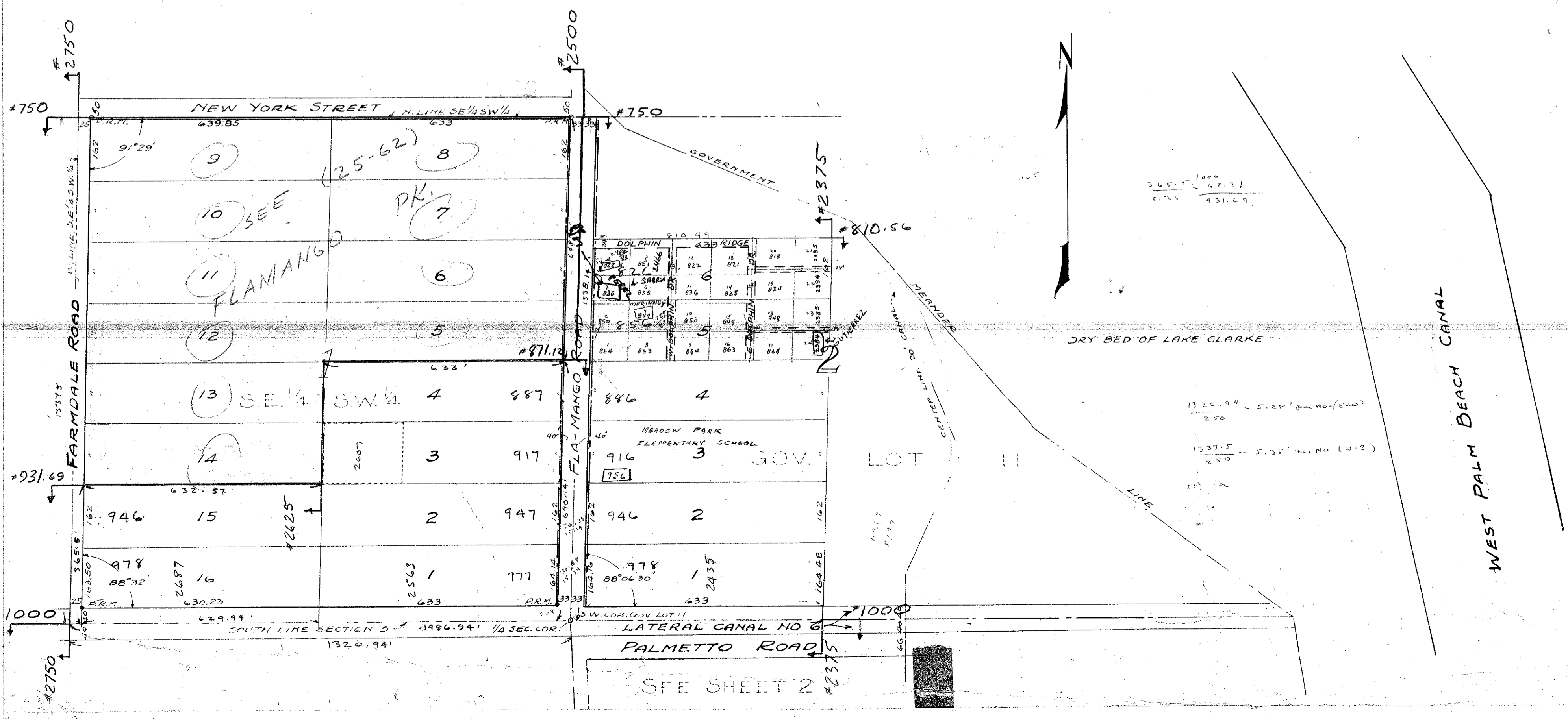
**68**

STATE OF FLORIDA  
COUNTY OF PALM BEACH  
This plat was filed for record at  
11:30 A.M. this 18th day of JANU-  
ARY, 1946, and duly recorded in  
Plat Book No. 20 of page 68  
J. ALEX ARNETTE,  
Clerk of Circuit Court  
By *J. M. Blackburn*, D.C.



639.35  
630.23  
9.12  
1237.15  
0.0714  
325.47  
630.23  
632.57  
0.0714  
4.0  
630.23  
2.9  
629.99'

ADDITION NO. 1  
SHEET 1 OF 2.  
**FLA-MANGO GROVELETS**  
SUBDIVISION OF SE 1/4 OF SW 1/4 GOV. LOT 11, SEC. 5, T.44S, R.43E.  
PALM BEACH COUNTY, FLORIDA  
OWNED AND DEVELOPED BY  
**FLA-MANGO GROVELETS, INC.**  
SCALE 1" = 200' JANUARY 1946.  
FUGATE ENGINEERING CO.  
WEST PALM BEACH, FLORIDA.



**DEDICATION**  
STATE OF FLORIDA  
COUNTY OF PALM BEACH  
KNOW ALL MEN BY THESE PRESENTS, That FLA-MANGO GROVELETS, INC. a corporation organized and existing under the laws of the State of Florida, the owner of the tract of land shown hereon as FLA-MANGO GROVELETS, and more particularly described as The Southeast One-quarter of the Southwest One-quarter and Government Lot 11 of Section 5, and Government Lots 1, 2, 3 and 4 of Section 8, all in Township 44 South, Range 43 East, Palm Beach County, Florida, has caused the same to be subdivided as shown on the attached plats, Sheets 1 and 2 and hereby dedicate to the perpetual use of the public as public highways. The ROADS shown thereon, reserving however unto itself, its successors, assigns, or legal representatives the reversion or reversions thereof, whenever abandoned by the public or discontinued by law.  
IN WITNESS WHEREOF, it has caused these presents to be signed by its President and attested by its Secretary by and with the authority of its directors, this 18th day of JANUARY, A.D. 1946.  
ATTEST *Roy Dilling* SECRETARY.  
FLA-MANGO GROVELETS, INC.  
By *J. C. McKeznie* PRESIDENT.

**ACKNOWLEDGEMENT.**  
STATE OF FLORIDA  
COUNTY OF PALM BEACH  
I HEREBY CERTIFY, That on this day, personally appeared before me, an officer duly authorized to administer oaths and take acknowledgements F.C. McKEZIE, Roy DILLING, president and secretary, respectively of FLA-MANGO GROVELETS, INC. to me well known and known to me to be the individuals described in and who executed the foregoing dedication, and they acknowledged before me that they executed the same, as such officers of said corporation for the purpose therein expressed, and that their act and deed is the act and deed of said corporation.  
WITNESS my hand and official seal at West Palm Beach, Florida, this 18th day of JANUARY, A.D. 1946.  
My Commission Expires March 7, 1948 *John S. Nichols* NOTARY PUBLIC.

**SURVEYOR'S CERTIFICATE.**  
I HEREBY CERTIFY, That the plats shown hereon as SHEETS 1 and 2 is a true and correct representation of a survey of the property described in the above dedication, made under my direction, and is accurate, to the best of my knowledge and belief, and that Permanent Reference Monuments have been set as required by law.  
*H. C. Fugate*  
REGISTERED LAND SURVEYOR (FLA CERT. 136)  
Subscribed and sworn to before me this 18th day of JANUARY, A.D. 1946.  
My Commission Expires March 9, 1948 *John S. Nichols* NOTARY PUBLIC.

1000-659  
APPROVED, January 18 1946.  
BOARD OF COUNTY COMMISSIONERS,  
OF PALM BEACH COUNTY, FLORIDA.  
*B. J. Jones*  
COUNTY ENGINEER  
col. B. W.  
**(20-68)**  
5/44/43